

Answers: 6.3.1.2 Lab - Managing the Startup Folder in Windows 8

Introduction

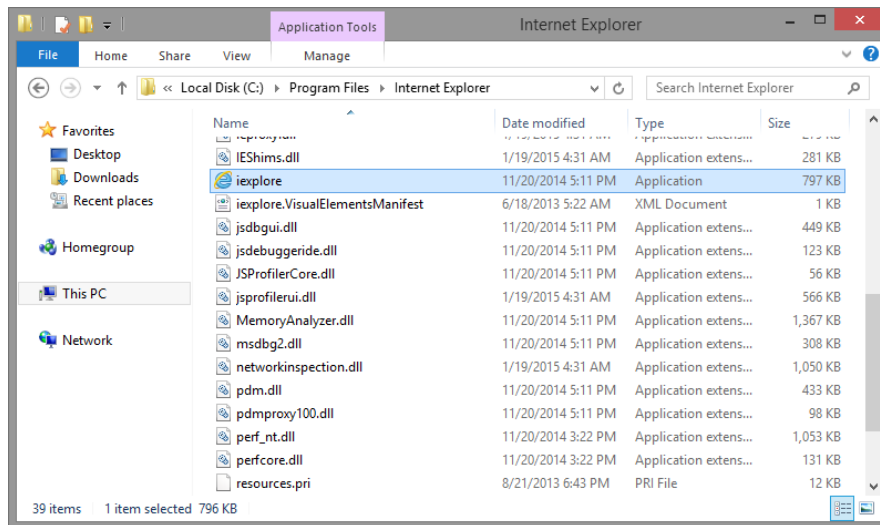
In this lab, you will customize the **Startup Folder** and the **Run Key** in the **Registry** to manage what applications are started automatically when **Windows** starts. You will also use the **Startup** tab to manage the programs already added to the **Startup Folder**.

Recommended Equipment

- A computer running Windows 8

Step 1: Customize the Startup folder.

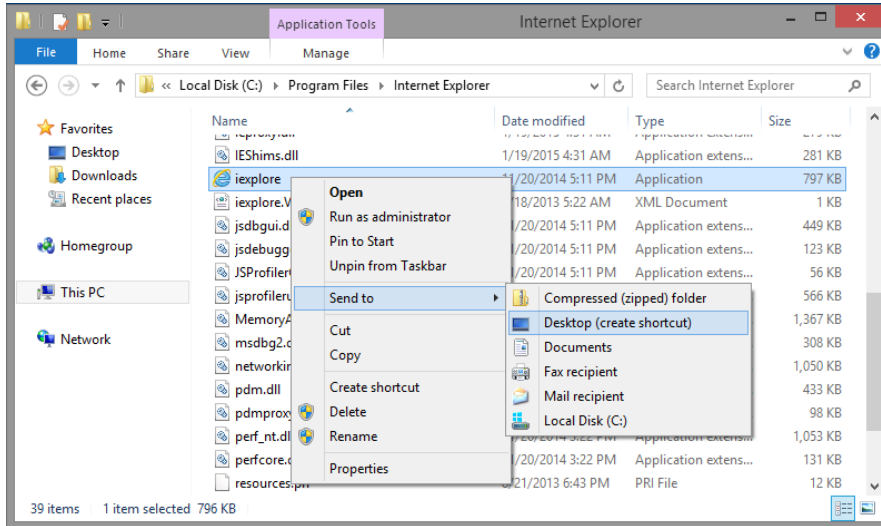
- To add a program to the **Startup Folder**, you must first locate it and create a shortcut. Open **File Explorer** and navigate to **C:\Program Files\Internet Explorer**.



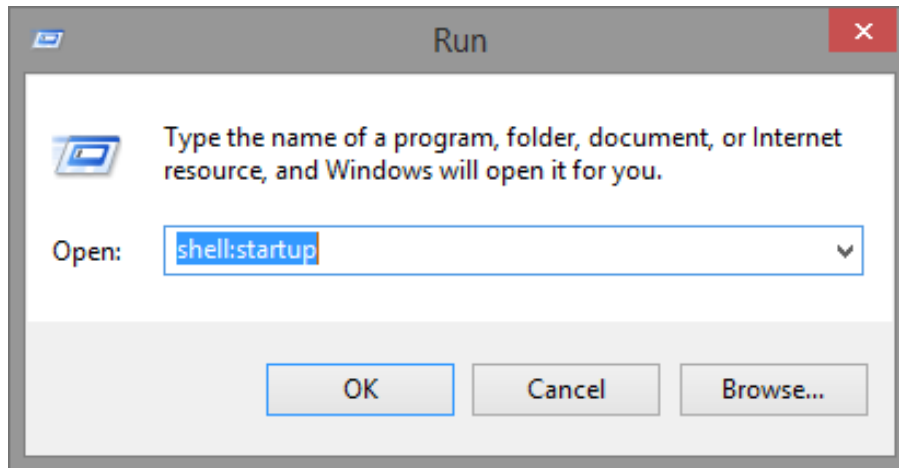
Lab – Managing the Startup Folder in Windows 8

- b. Locate the **Internet Explorer** executable file, **ieplorer.exe**. Right click the **ieplorer.exe** executable, click **Send to**, and select **Desktop (create shortcut)**. This will create a shortcut to **Internet Explorer** on the **Desktop**.

Note: Depending on your computer settings, the file extension may not be shown.

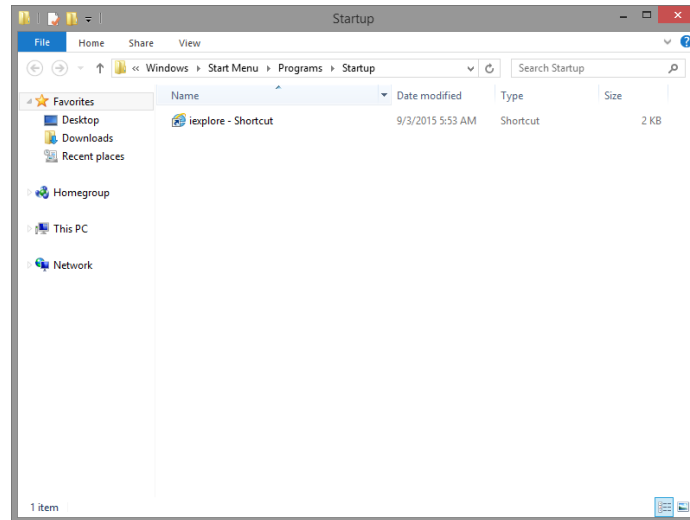


- c. Close the **File Explorer** window.
- d. To access the **Startup Folder** in **Windows 8**, click **Search**, type **run** and press **Enter**.
- e. The **Run** window opens. Type **shell:startup** and press **Enter**.



Lab – Managing the Startup Folder in Windows 8

- f. The **Startup** window opens. Move the **Internet Explorer** shortcut, previously created in the Desktop, to the **Startup Folder** by dragging it on the **Windows Explorer** window.



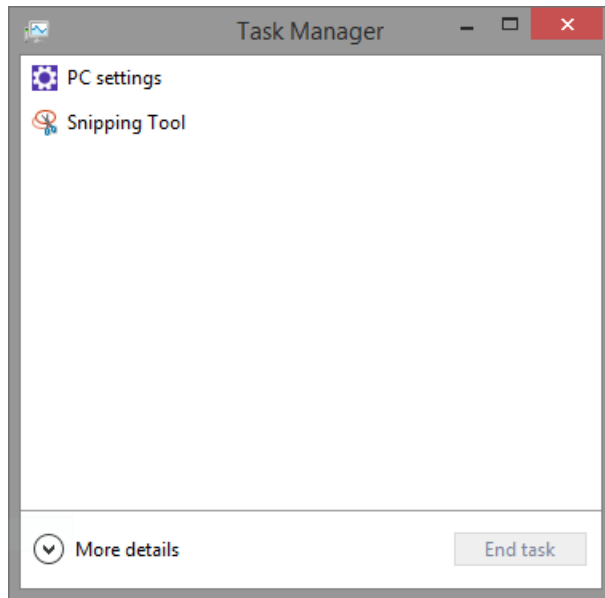
Now that the Internet Explorer shortcut has been added to the Startup folder, what should happen after the PC is rebooted?

- g. Restart the computer.
Did **Internet Explorer** automatically open after the boot process was complete?
- h. Close Internet Explorer.

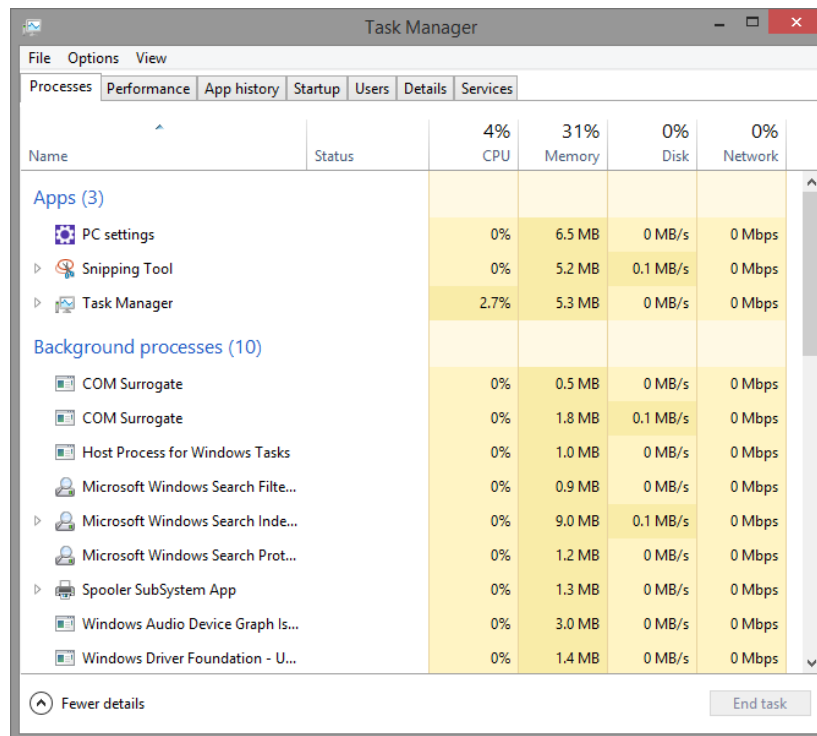
Step 2: Review computer setting in Task Manager.

- a. Open the **Task Manager** by right-clicking the **Taskbar** at the bottom of the desktop. Select **Task Manager** from the menu.

Note: Only **Desktop applications** can be added to the **Startup Tab**. Windows 8 Modern UI apps (**Windows Apps**) are not allowed to start automatically with Windows.

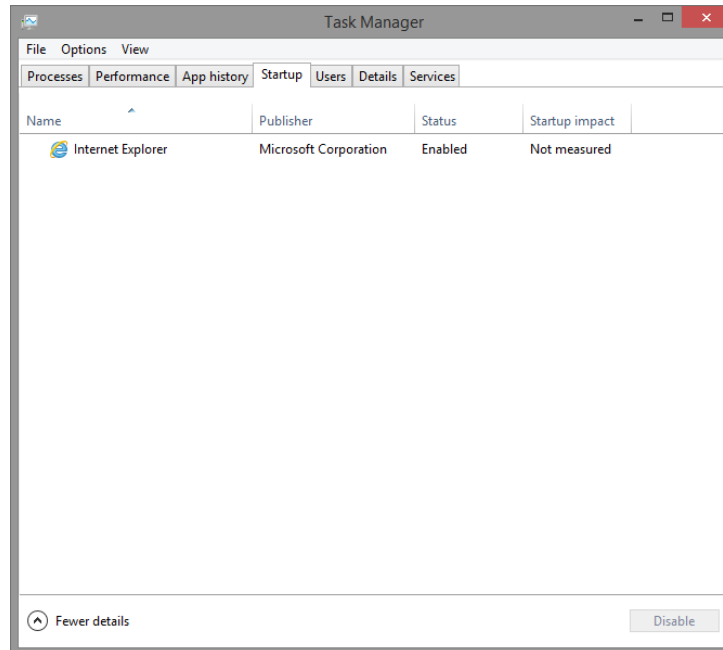


- b. To access more features, click **More details** at the bottom of the **Task Manager** window. You should see the **Processes** tab of **Task Manager**.



Lab – Managing the Startup Folder in Windows 8

- c. Click the **Startup** tab. A list of applications is displayed that will be started automatically when Windows starts. Notice that **Internet Explorer** is listed.

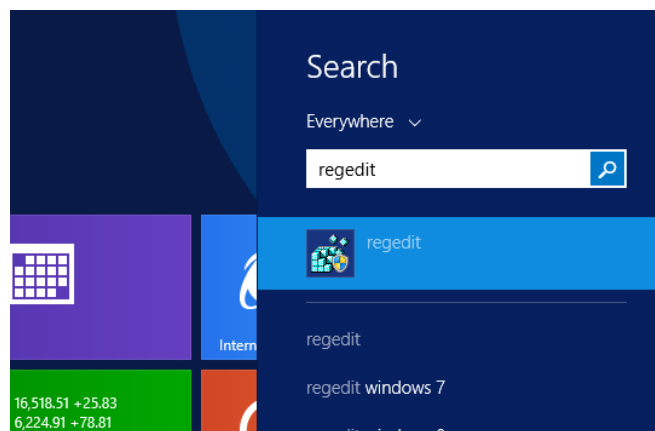


- d. Close all windows.

Step 3: Managing Startup Applications Using Windows Registry

The **Windows Registry** is a tree-like structure that can be used to configure many different aspects of **Windows**.

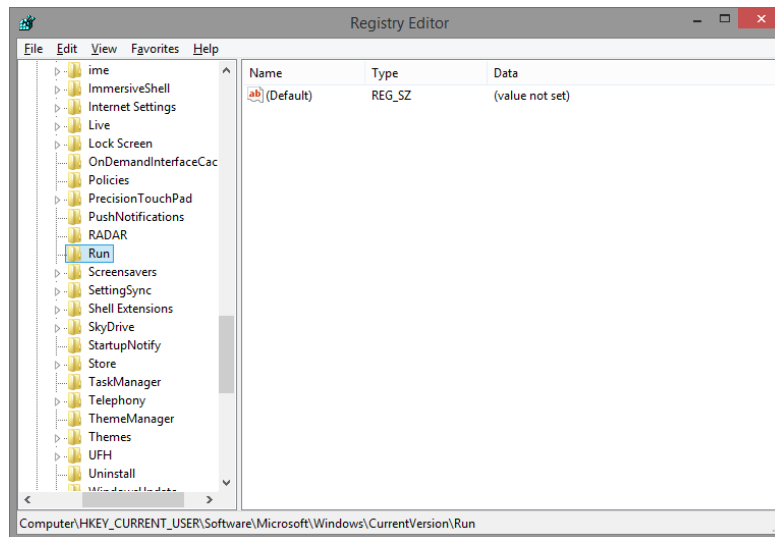
- a. To edit the **registry**, open **regedit**. Click **Search**, type **regedit**, and press **Enter**.



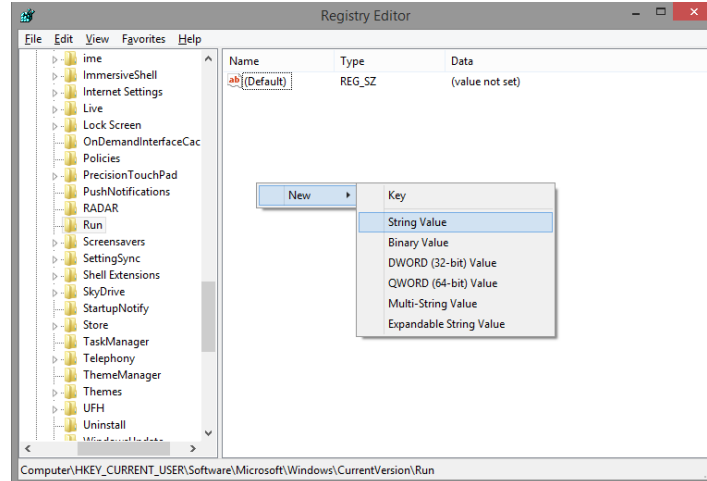
Lab – Managing the Startup Folder in Windows 8

- b. The **Registry Editor** window opens. Expand **HKEY_CURRENT_USER > Software > Microsoft > Windows > CurrentVersion > Run**.

Note: Incorrect changes to the registry can cause system errors and/or system instability.

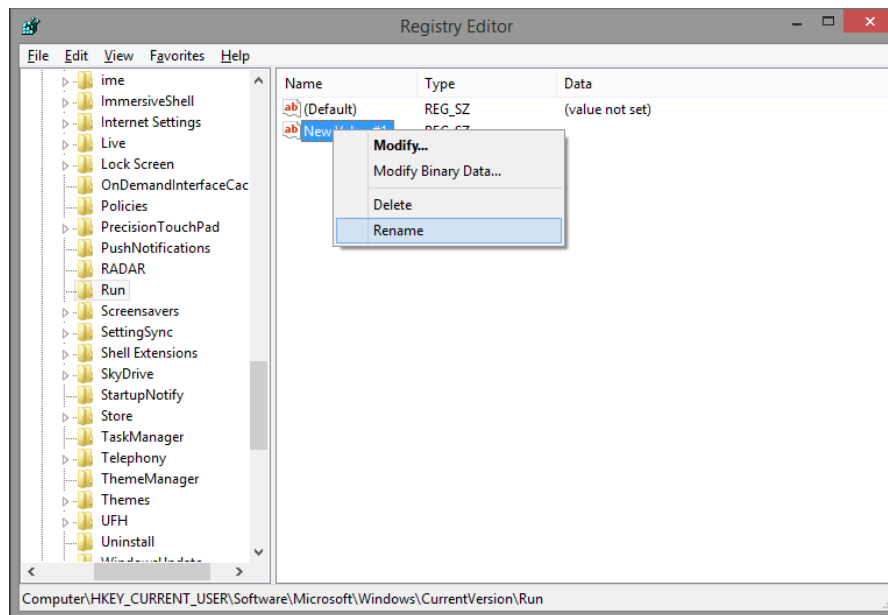


- c. Right-click anywhere in the white space in the right pane of the **Registry Editor** window.
- d. Select **New** and click **String Value**.
- e. A new **String Value** is created.

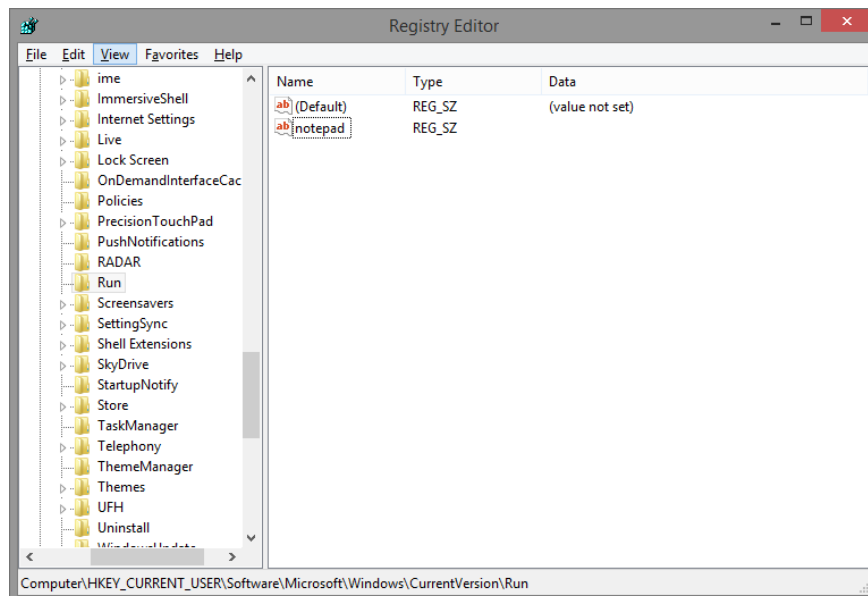


Lab – Managing the Startup Folder in Windows 8

- f. Click anywhere in the white space of the window. Right-click **New Value #1**, and select **Rename**.

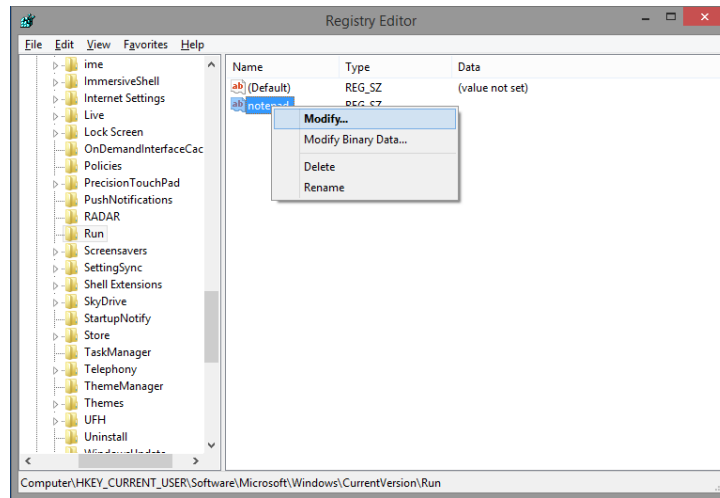


- g. Type **Notepad** for the new name and press **Enter**.

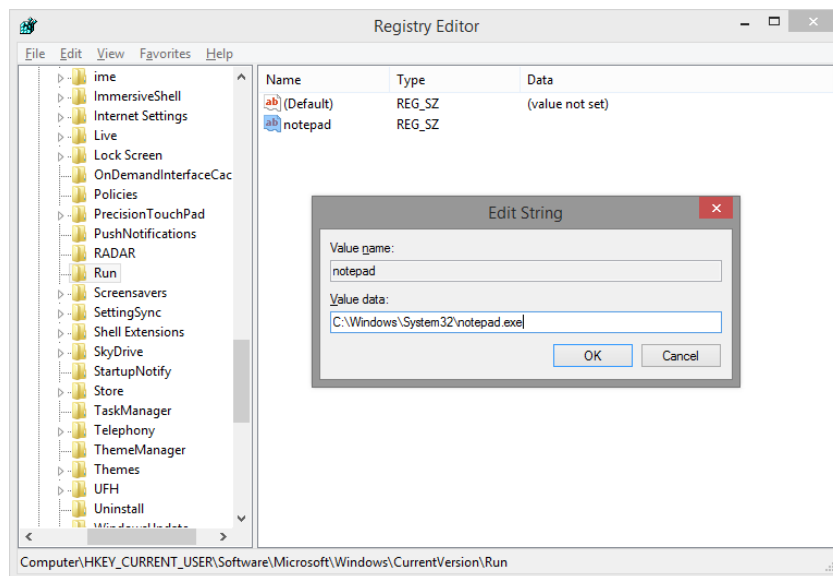


Lab – Managing the Startup Folder in Windows 8

- h. Right-click **Notepad** and select **Modify...**



- i. Type **C:\Windows\System32\notepad.exe** in the **Value name:** field and click **OK**.



- j. Close the **Registry Editor** window.
k. Restart the computer.
What happens when you log in?

- l. Close all open Windows.

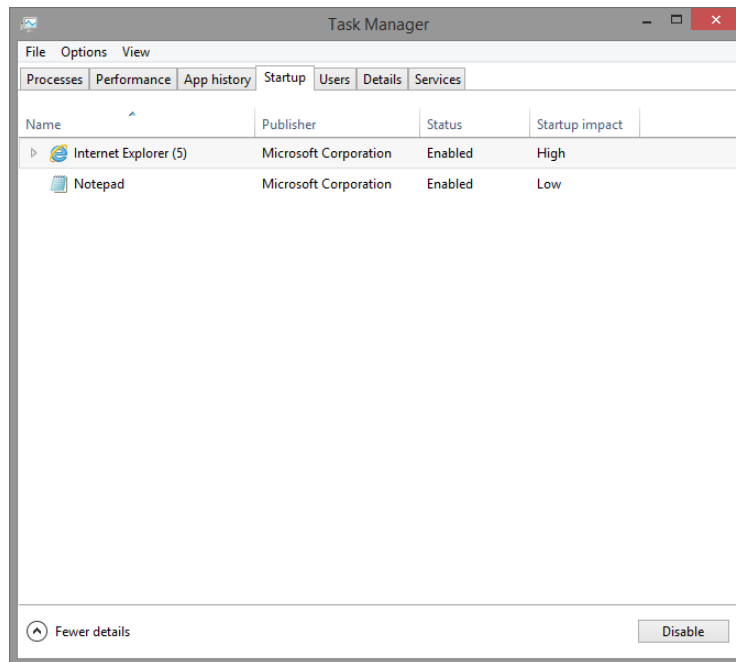
Step 4: Removing Applications From Startup

You can use the Startup Tab to manage what applications continue to run automatically in future reboots.

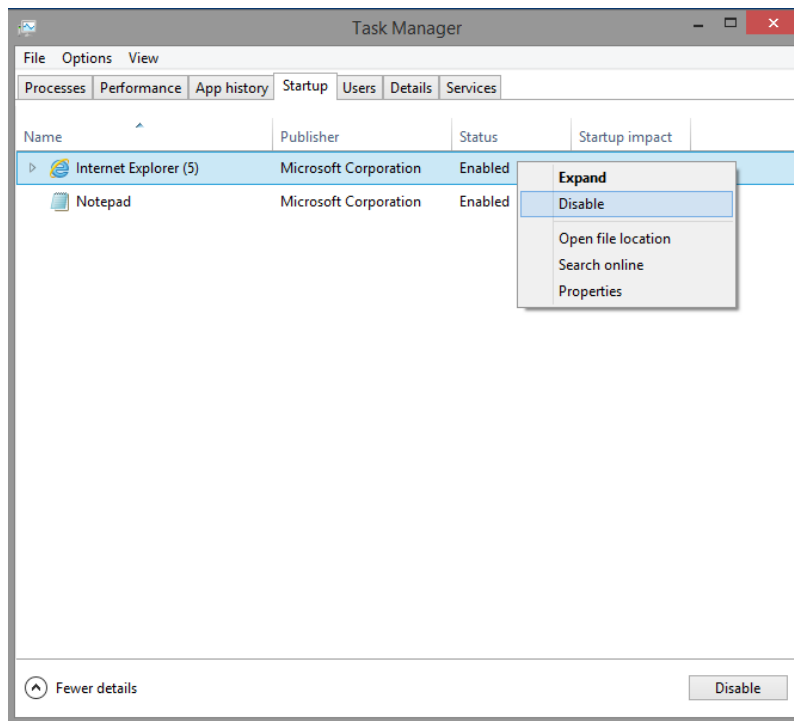
- a. Right click the **Taskbar** and select **Task Manager**.

Lab – Managing the Startup Folder in Windows 8

- b. Click **More details** and select the **Startup** tab. The **Startup** tab now shows **Internet Explorer** and **Notepad**.

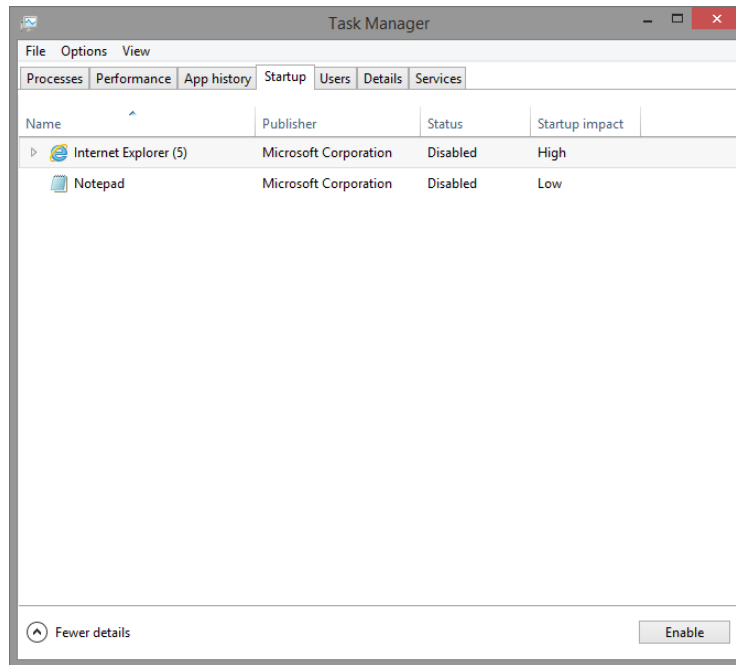


- c. Stop **Internet Explorer** from automatically starting after reboots by right clicking **Internet Explorer** and selecting **Disable**. While Internet Explorer is still listed under the **Startup** tab, it will no longer be automatically started after a reboot.



Lab – Managing the Startup Folder in Windows 8

- d. Do the same for **Notepad** by right-clicking **Notepad** and selecting **Disable**.



What does the **Startup impact** column indicate?

Reflection

Why would a user want to stop programs from starting automatically?